



Welcome to the Museum of Chelmsford

This is a visual guide of The Museum of Chelmsford. Look through these pictures before your visit to find out what you will find in the museum, park and cafe.



This is the main entrance to the park. There is a small gate and path next to this for pedestrians.



Parking spaces for blue badge visitors



The museum is in an old Victorian building.



The museum entrance is in the new brick extension.



Look down to your right and see the small window for children to look through.



There are automatic sliding doors at the entrance.



A member of staff is always at the front desk to welcome you. They wear a navy-blue t shirt or fleece with a red and gold logo.



The displays behind the front desk tell the story of Chelmsford's industries.



You can take one of our explorer packs or ask one of our friendly team for our sensory trail backpacks. You can also pick up one of our popular I Spy activity sheets.



The toilets are by the front desk. There is a separate accessible toilet on the right.



On the wall opposite the toilets, you will find framed covers of lots of Kes Gray's books.



The entrance to the Oi Chelmsford! gallery is to the right of the front desk and at the bottom of the stairs on the ground floor.



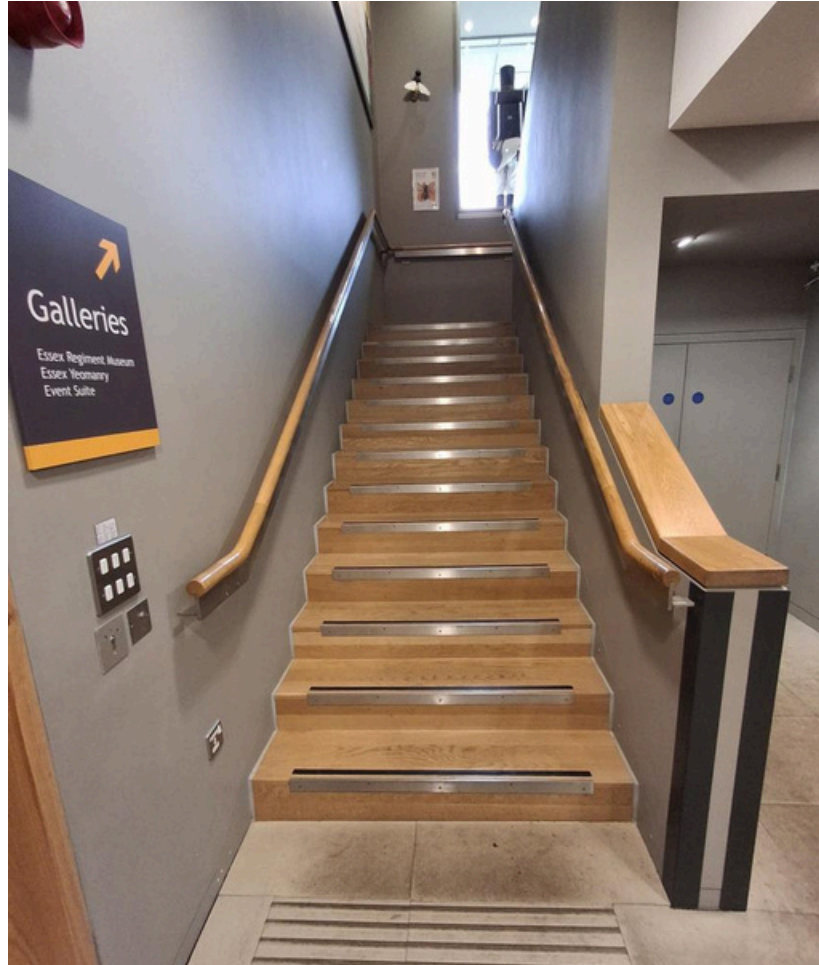
In the exhibition you will find lots of bright colours, hands-on exhibits and games to play with.



There is a den in the gallery which has a light inside which you can switch on.



Explore colours on our sensory light table, you can change the colour of the light, or create your own story by sticking magnets to the magnetic wall.



You can take the lift or can walk up the 22 steps to the first floor.
Look up and see the bees on the way up.



The lift will take you upstairs in just over eight seconds.



On the landing there is a big glass case that shows animals that live in the park. The orange boxes in the museum mean they are 'hands on' activities.



On the mezzanine at the top of the stairs you will find some of Kes Gray's toys on display



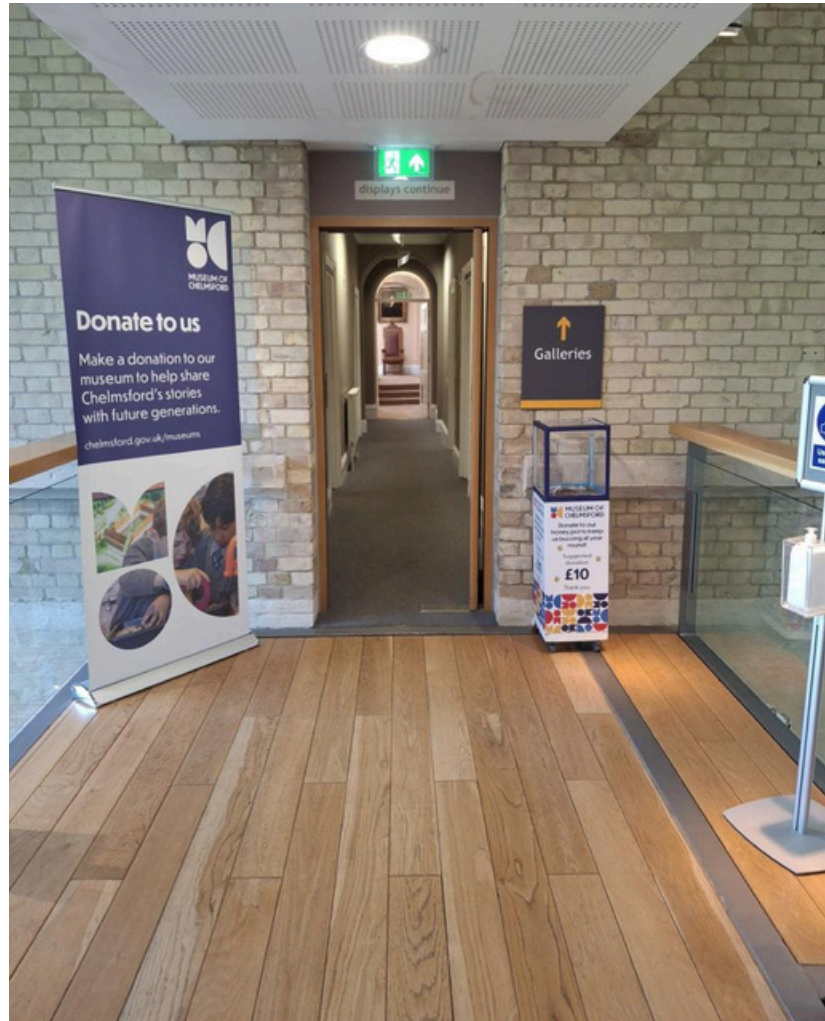
This is the entrance to the Essex Regiment Museum.
There are lots of mannequins in here.



It is quite dark in the Essex Regiment Museum.



Next is the Essex Yeomanry gallery. This corridor is dimly lit with military displays and a mannequin.



Through the doorway is a narrow corridor with several small rooms to explore.



On the left is the costume room. With mannequins and a children's dressing up box. The displays change often so may look different when you visit.



Next door is the toy room. It is small and full of toys.
There are a selection of toys to play with.



On the right is the Stone Age to Iron Age room. It feels cooler in here. Take a seat and watch the video and hear sounds of the prehistoric times.



This is the Roman Room. There is a ramp with a glass panel that leads up to the next room. If you don't like the glass floor you can go along the corridor and walk up the three steps.



This is the Medieval room. The wall in front of the bench has a model showing the burial of an Anglo Saxon warrior. The scene slowly changes.



Cross the landing into the Tudor gallery. The films on the screen only play when you push the button. The orange table has an interactive touch screen map.



This is the Victorian gallery. You can enter there from the Tudor Gallery or the landing. There is a video about the Corn Exchange which starts when you walk in.



The 20th Century gallery is through a door on the landing next to the Victorian gallery. There's lots of screens to press and play with in here.



This room shows a video on a loop. There is sound once someone enters the room.



The Our Chelmsford Room is bright with white walls and natural light. It is usually quiet so can be used as a 'chill out' space. Children's artwork is currently displayed.



The Victorian landing



Once you have finished exploring upstairs, walk down the 22 steps to the Victorian Hall. Right now, the hall is set up for Christmas. You will find a big Christmas tree, a sleigh and two reindeer.



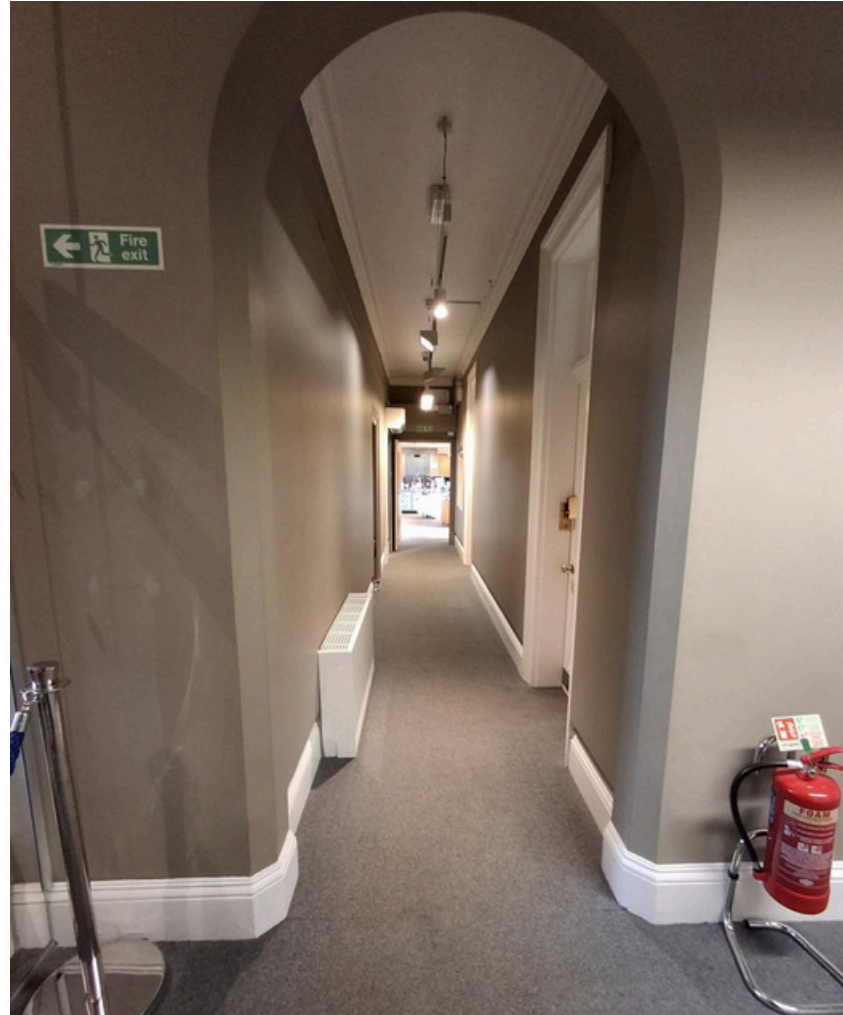
You can sit in the sleigh.



There is case underneath the stairs displaying more of the collection.



In the hall there is our bear 'Boris' and the 'talking portrait' of Mr Wells, who owned the house.



The narrow corridor takes you back to the reception desk and gift shop.



As you go down the corridor look at the Victorian Kitchen.



And the ceramics room. With a colourful green and black geometric design floor.

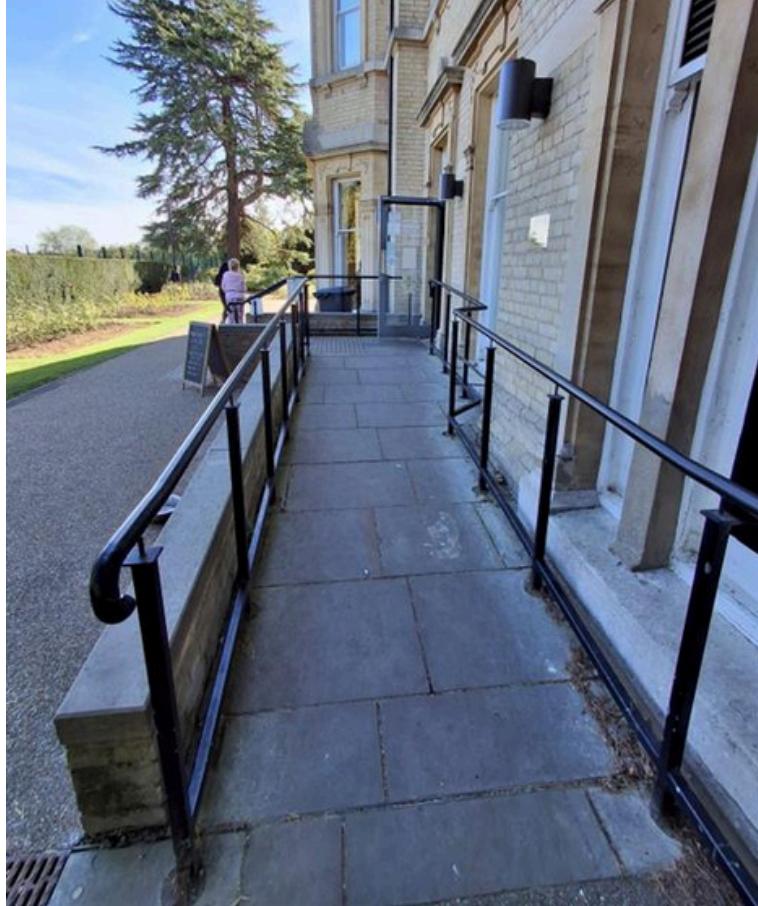


At the end of your visit there is a small gift shop by the reception desk.

The Hive Cafe



To reach the café you will need to walk outside of the museum and turn right. The entrance is on the side of the building. There are 4 steps to reach the café entrance or you can use a ramp.



If you require step free access you will need to turn left outside the museum and walk all the way around the Victorian House. There is a ramp that leads to the café entrance.



At the café reception a friendly member of staff will show you to a table and take your order. It can be busy and noisy in the café especially at lunchtime. If it is warm you can sit outside the café or have a picnic in the park. There are toilets in the café with both baby changing and accessible toilet.



There is lots to see and do in the park.



Look out for the cannon.



And the tram that was used on Southend Pier. You can see its original engine in the museum front window display.



Lots of people walk their dogs in the park. This walled garden is often a lot quieter than the main park. It is a good place to have a picnic on a nice day.



There are two playgrounds in the park and lots of open space to have fun or chill out.

We do not have a changing places facilities at the museum.

The nearest are:

Market Road toilets (1.4 miles away)

Market Road
Chelmsford
CM1 1JP

Riverside Leisure Centre in town (1.7 miles away)

Victoria Road
Chelmsford
CM1 1FG

Please see the Changing Places link below for more information:

[Changing Places Toilets](#)



If you any questions, please do not hesitate
to contact us here at the museum.



Email: MuseumAssts@chelmsford.gov.uk

Call : 01245 605700

Please find the link to the museums page on the
AccessAble website below.

[AccessAble - Your Accessibility Guide](#)

