



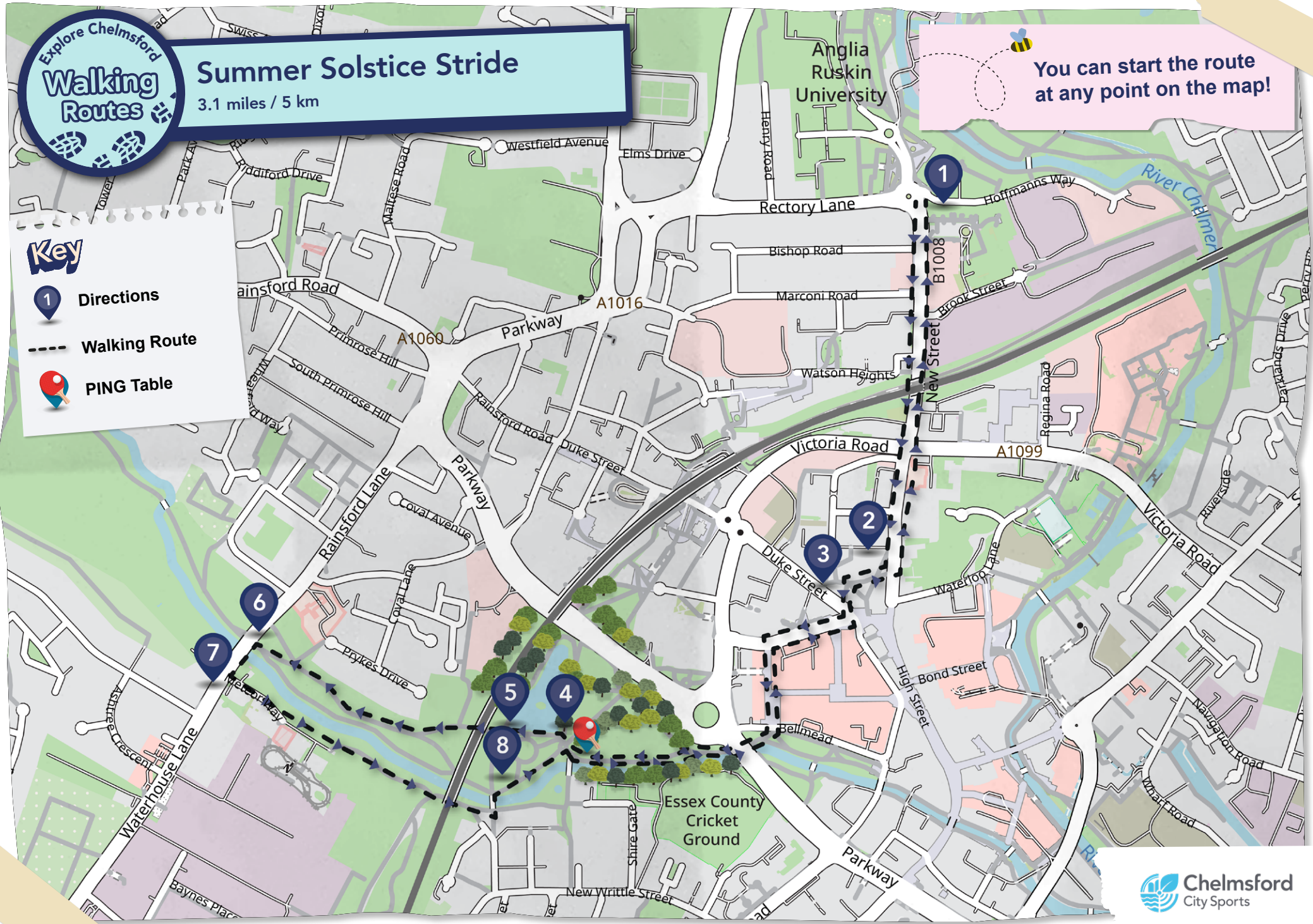
Summer Solstice Stride

3.1 miles / 5 km

You can start the route at any point on the map!

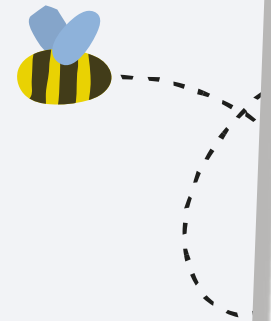
Key

- Directions
- Walking Route
- PING Table



Directions

1. Start: Anglia Ruskin University Lord Ashcroft Building
Turn left out of building and follow New Street. Use the Pelican crossing and continue past the police station to Chelmsford Cathedral
2. Cross into Cathedral grounds, exiting by duke street. Cross at designated crossing and turn left and follow around corner to Market Road
Use first crossing after the corner and cross market road turn right after crossing until you reach Cornhill Exchange
3. Turn left at Cornhill Exchange with the market on your right. Cross the zebra crossing into Bellmead and enter the park. Turn right towards bridge underpass
4. Follow the path with the river to your left until you reach the lake
5. Follow path with the lake on your right and head under the viaduct.
Follow the path with the river on left until you reach the Waterhouse Lane underpass (do not take the underpass)
6. Fork right and walk up the slope to Waterhouse Lane and turn left to cross the bridge. Keep walking until you reach Meteor Way.
7. Turn left into Meteor Way and follow to the end. Take the path towards the via-duct and continue until you reach the first stone bridge and turn left over bridge. Turn right at the other side of the bridge and follow the path with river on your right
8. Turn right at the junction and follow point 3 in reverse, back to the University.



Share your photos and adventures with us **#explorechelmsford**



Please submit your answers to csaw@chelmsford.gov.uk to enter the prize giveaway and prize draw.
T&C's apply please see website for more information.
www.chelmsford.gov.uk/explore